

Migration Profile of Puerto Ricans at a State Level, 2000-2022

BY Jhinia Garcia, Luis Palomino & Charles R. Venator-Santiago

About this Report

This report provides a profile of Puerto Rican migration between the Puerto Rican islands and the United States during the period of 2000 and 2022. We document migration from Puerto Rico to the mainland or various states (in migration), migration from the United States to Puerto Rico (out migration), and the difference between the two (net migration).

In-migration considers the Puerto Rican population that has lived in Puerto Rico in the previous year and is living in the state of interest. Out migration considers the Puerto Rican population that has lived in the state of interest the previous year and is living in Puerto Rico. Net migration is the difference between in-migration and out-migration. The goal of this data sheet is to identify patterns of mobility of Puerto Ricans between 2000 and 2022.

About the Authors

Jhinia Garcia (jhinia.garcia@uconn.edu) is a data analyst and research assistant for the University of Connecticut's Puerto Rican Studies Initiative (UConnPRSI). Luis Palomino (luis.palomino@uconn.edu) is a Research economist for the UConnPRSI.

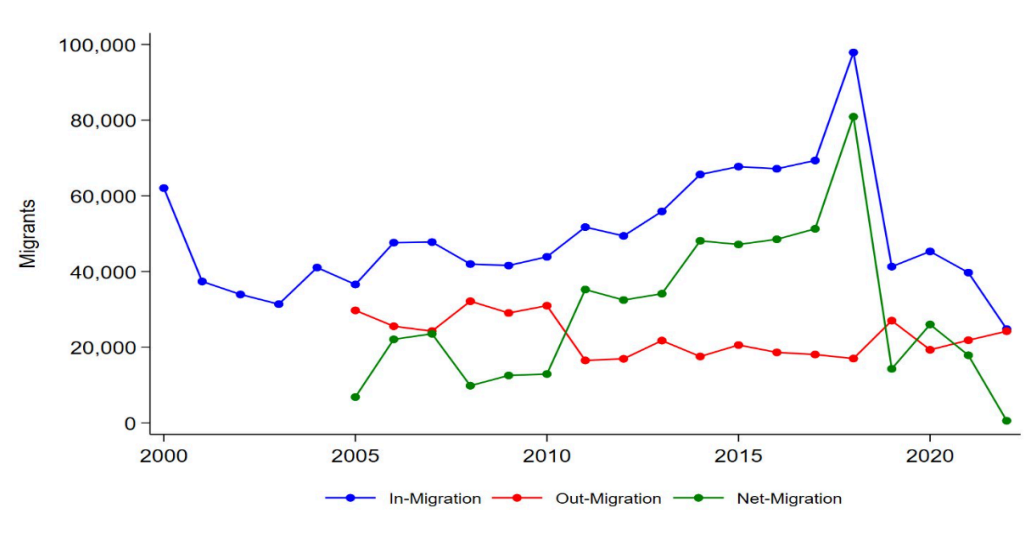
Charles R. Venator-Santiago (charles.venator@uconn.edu) is the director of the University of Connecticut's Puerto Rican Studies Initiative.

Historical Migration Trends, 2000-2022

Migration trends among Puerto Ricans between 2000 and 2022 began to change between 2018 and 2019. During the two decades measured in this report, migration from the Puerto Rican islands to the states (in migration) began to grow in 2003 and reached a peak in 2018.

Return migration from the states to Puerto Rico (out migration) began to decline in 2010, and has been growing since 2020. However, the overall migration of Puerto Ricans (net migration or the difference between in migration and out migration) has been declining since 2018 (Figure 1).

Figure 1. Historical Trends of Puerto Rican Migration Between States and Puerto Rico, 2000-2022

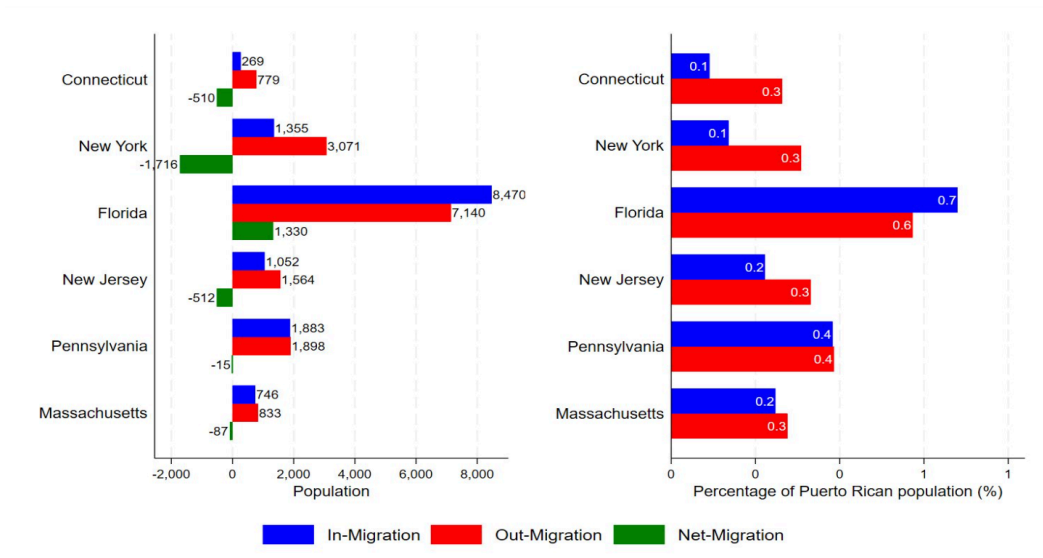


Data source: IPUMS USA, American Community Survey (1-Year Data). Data Hub: Puerto Rican Studies Initiative

Migration Trends by States (Top 6), 2000-2022

The states with the highest Puerto Rican populations in the United States are Florida, Pennsylvania, New York, New Jersey, Massachusetts and Connecticut. In the period 2000-2022, the net migration of Puerto Ricans was positive in Florida because the proportion of in-migration was higher than that of out-migration. However, in the same period, the net migration of Puerto Ricans decreased in Florida by 93%, in Pennsylvania by 100%, in Connecticut by 104%, in New Jersey by 178%, and in New York by 183% (Figure 2).

Figure 3. Migration of Puerto Ricans Between the States and Puerto Rico by State, 2022

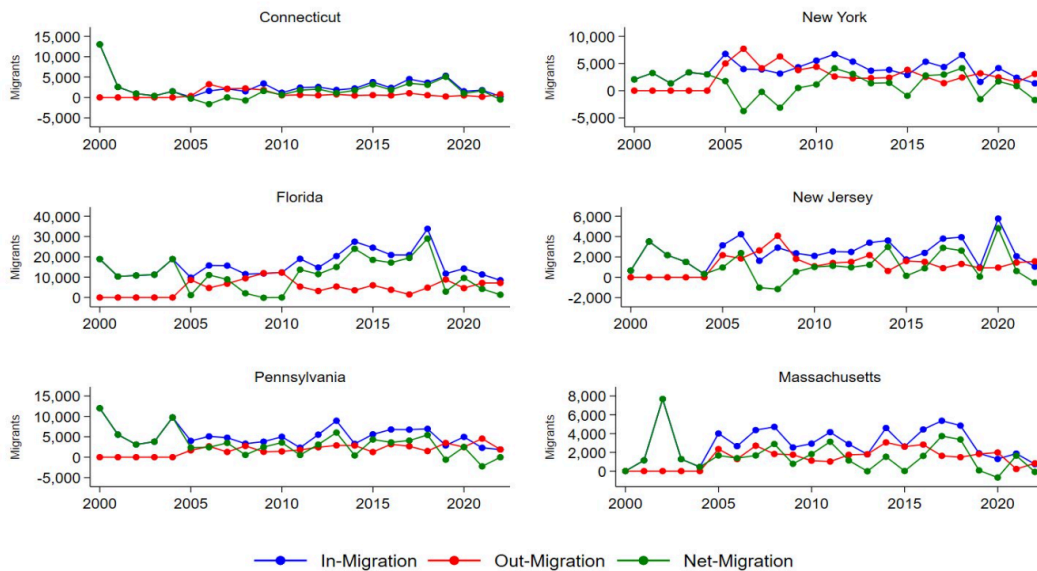


Data source: IPUMS USA, American Community Survey (1-Year Data). Data Hub: Puerto Rican Studies Initiative

Migration Trends by States (Top 6), 2022

In 2022, the movement of Puerto Ricans to different states showed varying trends. Florida experienced a positive net migration in their Puerto Rican population, with 1,330 individuals. However, the net migration was negative in Pennsylvania (-15), Massachusetts (-87), Connecticut (-510), New Jersey (-512), and New York (-1,716) (Figure 3).

Figure 2. Migration Trends of Puerto Ricans Between States and Puerto Rico by State, 2000-2022

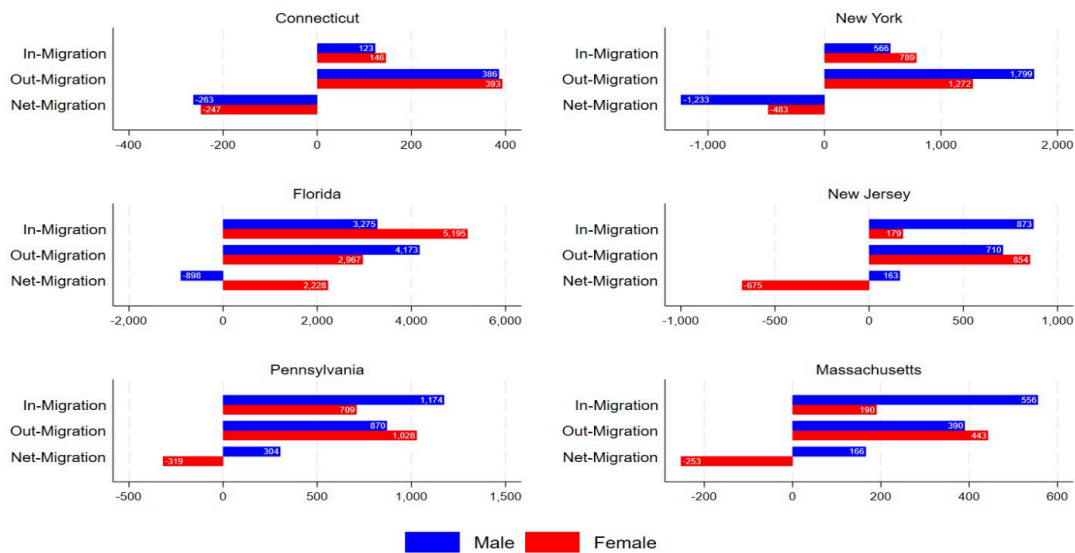


Data source: IPUMS USA, American Community Survey (1-Year Data). Data Hub: Puerto Rican Studies Initiative

Migration Trends by Gender (Top 6), 2022

Migration trends in 2022 varied when measured by gender. In 2022, whereas more men migrated from Puerto Rico to Massachusetts (556), New Jersey (873), Pennsylvania (1,174), more women migrated to Connecticut (146), New York (789), and Florida (5,195). In contrast, while more men returned to Puerto Rico from New York (1,799), Florida (4,173), more women returned from Connecticut (393), Massachusetts (443), New Jersey (854), and Pennsylvania (1,028). There was a negative net migration for men in Connecticut (-263), Florida (-898), and New York (-1,233). In contrast, the net migration of women was negative in half of the states, namely Pennsylvania (-319), New York (-483), and New Jersey (-675) (Figure 4).

Figure 4. Migration of Puerto Ricans Between States and Puerto Rico by Gender, 2022

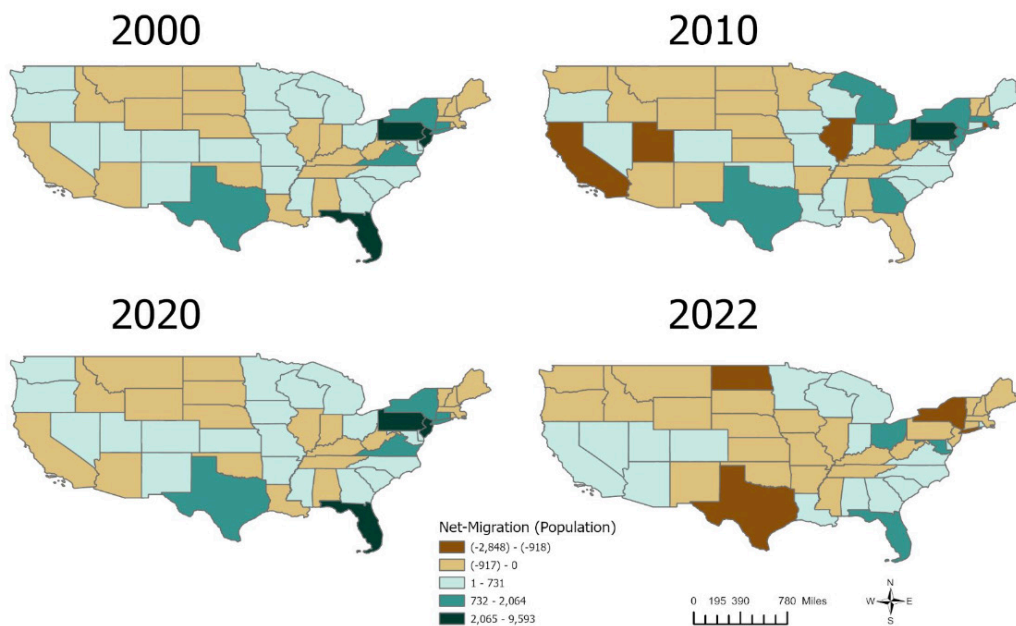


Data source: IPUMS USA, American Community Survey (1-Year Data). Data Hub: Puerto Rican Studies Initiative

Migration Trends by Spatial Distribution (Top 6), 2022

Net-migration of Puerto Ricans during the 2000 and 2022 period ranged between -2,848 and 9,593. In 2000, some Northern and Southern states mostly saw gains Puerto Rican population from Puerto Rico. However, in other years, some states in major regions changed their net migration patterns of Puerto Ricans from positive to negative or vice versa (Figure 5).

Figure 5. Spatial Distribution of Net - Migration of Puerto Ricans by State



Source: American Community Survey (IPUMS USA), & IPUMS NHGIS' geospatial data. Data Hub Puerto Rican Studies Initiative

Where Did We Get This Information From?

We use microdata from the United States Census American Community Survey (1-Year ACS) harmonized by IPUMS U.S.A.

About Our Funding

The Puerto Rican Studies Initiative was initially funded by an American Rescue Plan Act grant awarded by the Connecticut General Assembly. It is currently funded by a grant from the Connecticut General Assembly, in collaboration with the Puerto Rican and Latino Legislative Caucus.

How To Cite This Report

2024. Garcia, Jhinia, Palomino, Luis and Venator-Santiago, Charles R. Migration Profile of Puerto Ricans at a State Level, 2000-2022. Storrs, Connecticut: University of Connecticut, Puerto Rican Studies Initiative.

The Puerto Rican Studies Initiative for Community Engagement and Public Policy (PRSI) is a research initiative seeking to document and support Puerto Ricans' vital economic, intellectual, and cultural contributions to Connecticut and provide research-based support for the development of public policies addressing the needs of Puerto Ricans in the State of Connecticut.

For more information, please visit our website:

<https://puerto-rican-studies-initiative.clas.uconn.edu/>

